



圖書在CIP數據 近代中國經濟史綱要 丁世 1.1冊



Japan

kimono
kimono

着物
きもの



Challenge

The word kimono means
a 'thing to wear'.

ki

着

wear

mono

物

thing

The Kimono is made up
of many different parts.

Name the parts of the
kimono.





coin
kouka

硬貨
こうか

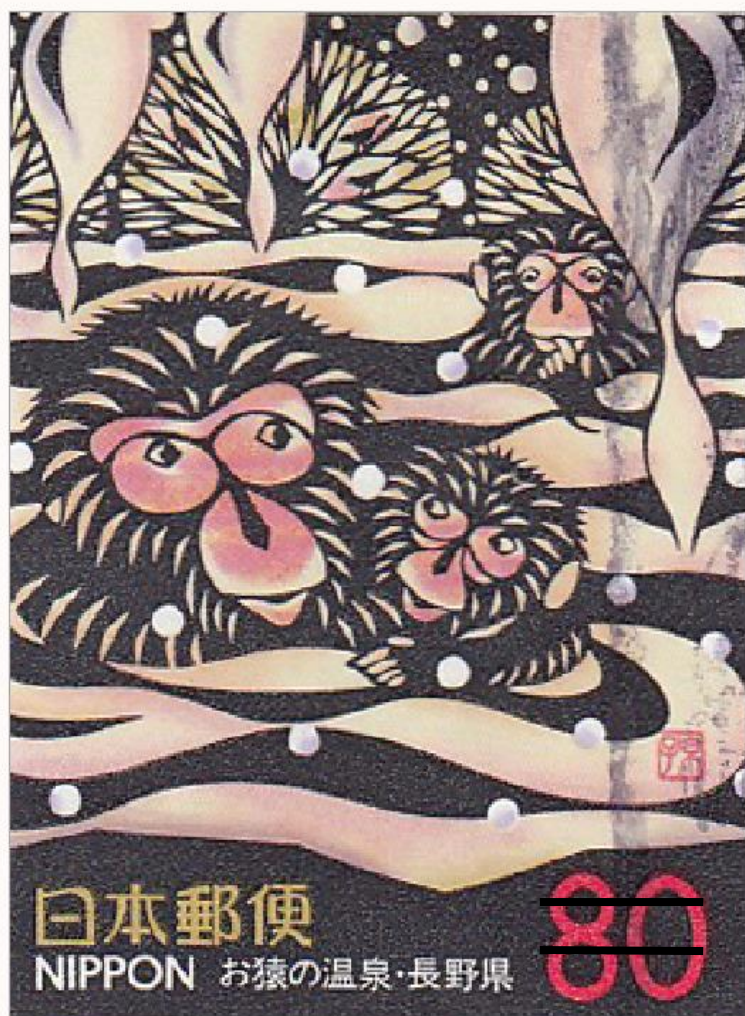
The word kouka means 'hard currency'. Part of the character for 'ka' means shellfish or shell because shells were used as money.

ka 貨 → 貝 kai shell

Challenge

What is the currency of Japan?

How much is it worth compared to the British pound?



Japan

Japanese macaque
nihonzaru 

日本猿
にほんざる

[usually only written in kana]

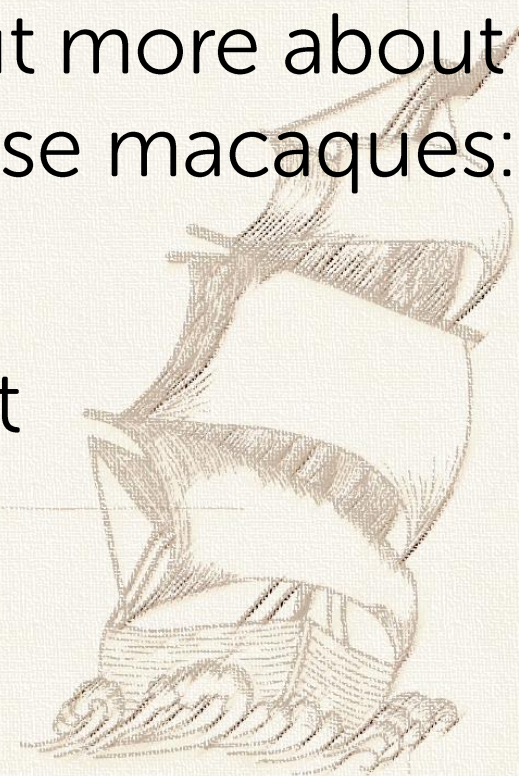
日本 means Japan
猿 means monkey

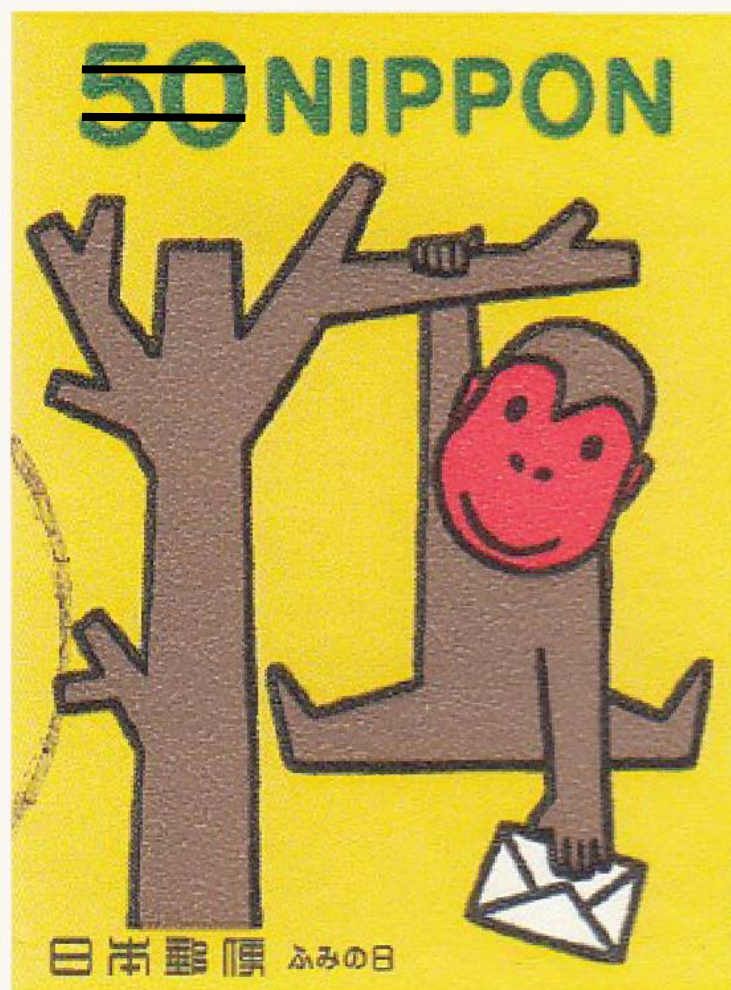
The Japanese macaques
are the monkeys behind
the saying "see no evil,
hear no evil, speak no evil".

Challenge

Find out more about
Japanese macaques:

- range
- habitat
- diet
- young





Japan

letter writing day
fumi no hi

ふみの日

On the 23rd July each year, Japan celebrates 'Letter Writing Day'. The Japan Post Office issue special stamps. This stamp showing a monkey with a letter was issued in 2002.

Challenge

Hold your own 'Letter Writing Day' and write at least one letter to a relative or friend.

Send the letter with commemorative (picture) stamps.



calligraphy
shodou

書道
しゅどう

This character is an
ancient way of writing ox.
The modern character for
ox is -

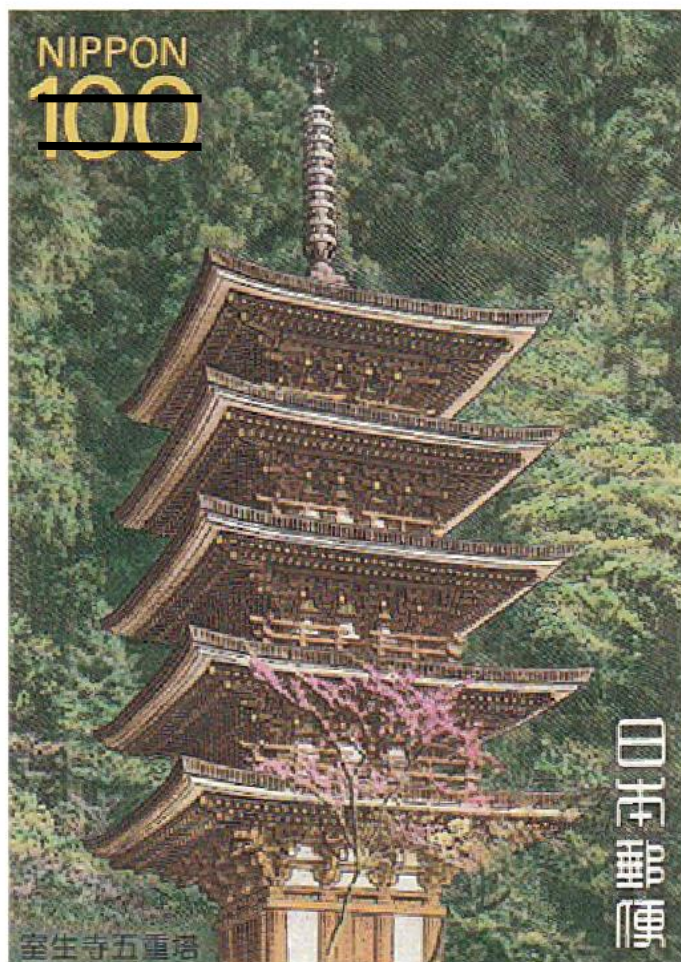
牛

ushi

うし

Challenge

Practise writing the
ancient and modern
character for ox.



Japan

pagoda
tajuutou

多重塔
たじゅうとう

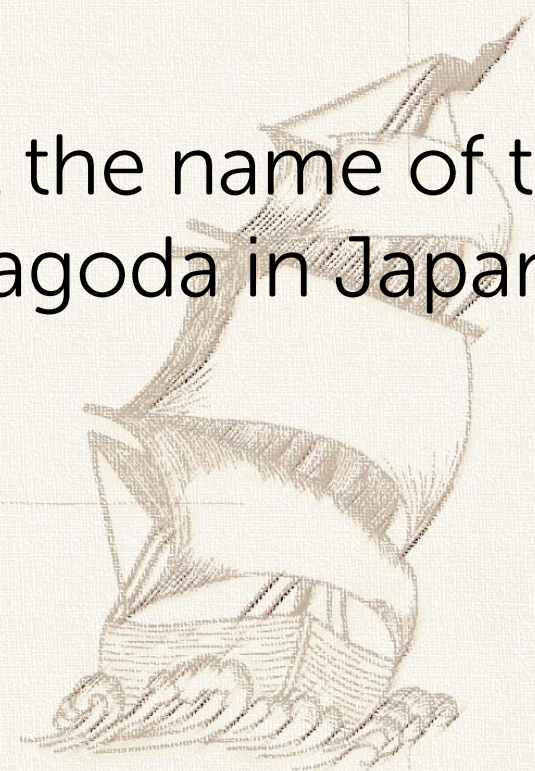
多 means many
重 means tiered
塔 means tower

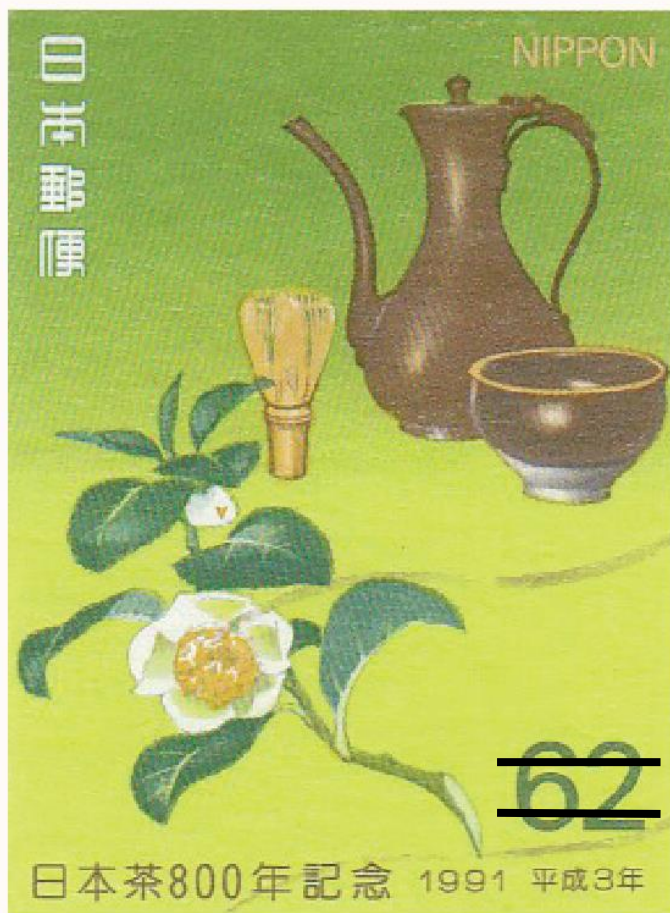
There are usually two types of pagoda – five-tiered and three-tiered. The five-tiered is the most common:

五重塔
gojuutou

Challenge

Find out the name of the tallest Pagoda in Japan.





tea
ocha

お茶
おちゃ

Tea is one of the most common drinks in Japan and an important part of Japanese culture. It is usually served with something tasty. For example, a sweet made from rice and red bean paste.

Challenge

Find out how tea is made.

Draw a diagram to show the different stages.



calligraphy
shodou

書道
しゅどう

This character is an ancient way of writing rabbit. The modern character for rabbit is

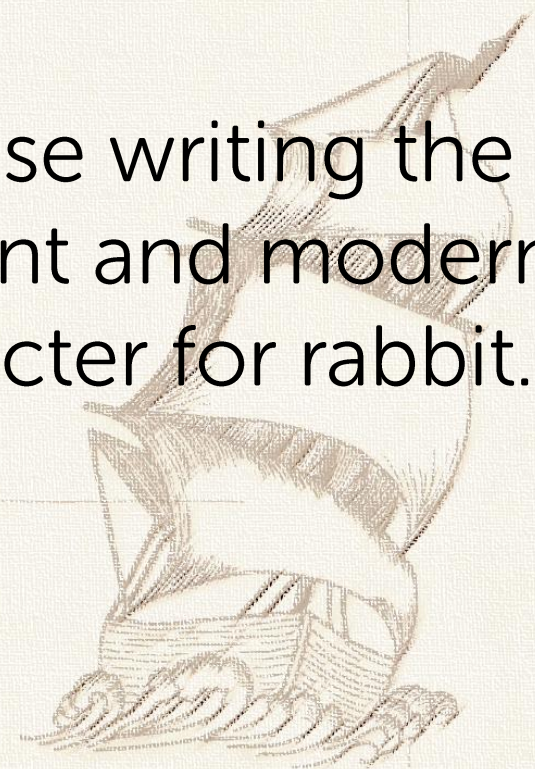
兎

usagi

うさぎ

Challenge

Practise writing the ancient and modern character for rabbit.





calligraphy
shodou

書道
しゅどう

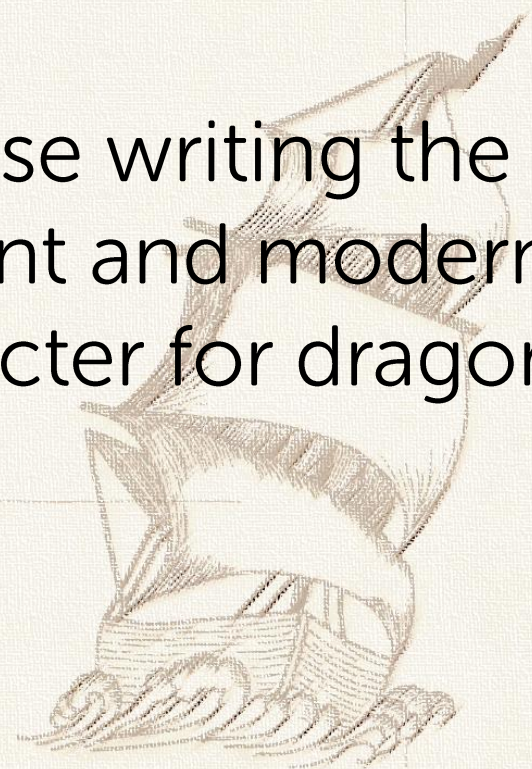
This character is an ancient way of writing dragon. The modern character for dragon is

竜

tatsu

Challenge

Practise writing the ancient and modern character for dragon.





Japan

calligraphy
shodou

書道
しゅどう

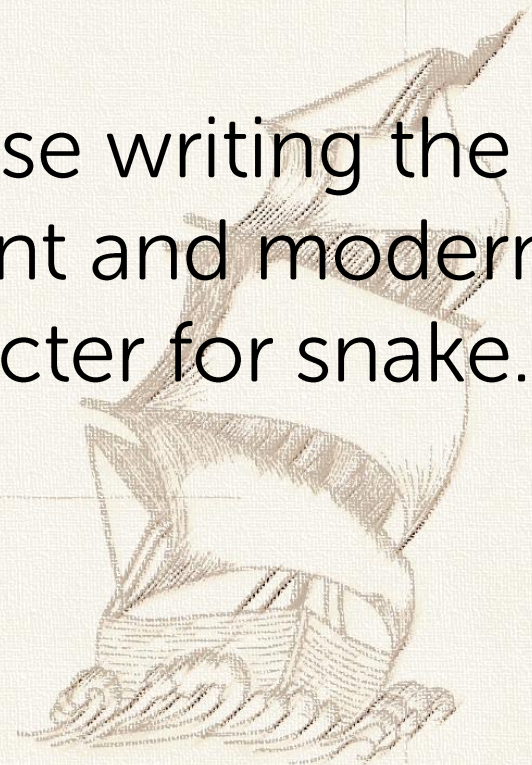
This character is an ancient way of writing snake. The modern character for snake is

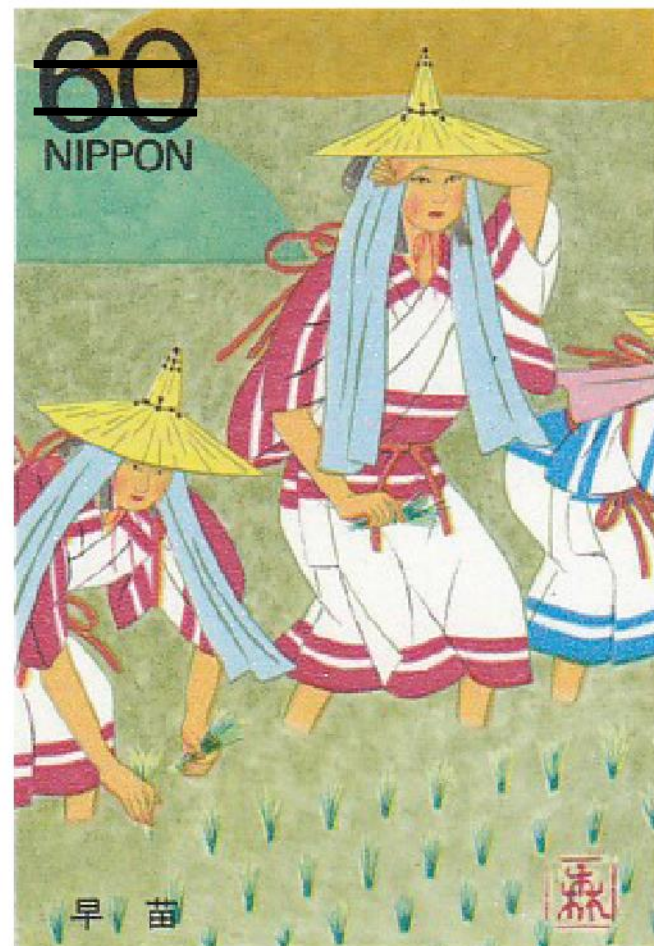
蛇

hebi

Challenge

Practise writing the ancient and modern character for snake.





Japan

rice
okome

お米
おこめ

Rice is an important food
and is served at most
meals, including breakfast.
The word for meal means
cooked rice:

gohan 御飯 ごはん

Challenge

Find out how rice is grown.

How many types of rice do
you know?

What is *omochi*

お餅 おもち?



bonsai
bonsai



盆栽
ぼんさい

Bonsai is the art of
growing small trees in
pots. Bonsai means
'planting in a tray'

bon 盆 tray
sai 栽 planting

Challenge

Either grow your own
bonsai or make a
model bonsai tree or
make a collage picture
of a bonsai tree.



Tensho Oban coin

Tenshouooban

天正大判

てんしょうおおばん

Challenge

This is an old large gold coin from 1588.

天正

Tensho is an era
(period of time)

大判 means big seal

Japan has an amazing
history. Find out about
the Emperors of Japan.



Japan

traditional crafts
dentoukougei



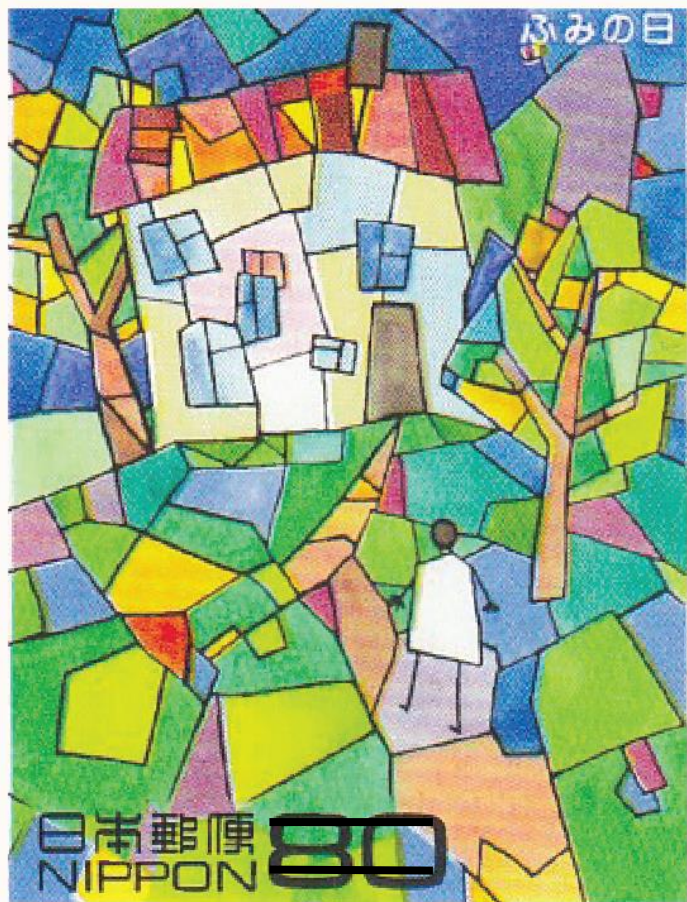
伝統工芸
でんとうこうげい

Japan is famous for many traditional crafts—including woodblock prints, calligraphy, pottery, wood carving, paper making, lacquerware and origami.

Challenge

Make an origami animal.





Japan

letter writing day
fumi no hi

ふみの日

On the 23rd July each year, Japan celebrates 'Letter Writing Day'. The Japan Post Office issue special stamps. This stamp is called 'Message from Rainbow Forest' and was issued in 1997.

Challenge

Japan has many wonderful stamps.

Place a Japanese stamp onto A5 paper and create a drawing around it using the stamp as the inspiration for your drawing.



Japan

calligraphy
shodou

書道
しゅどう

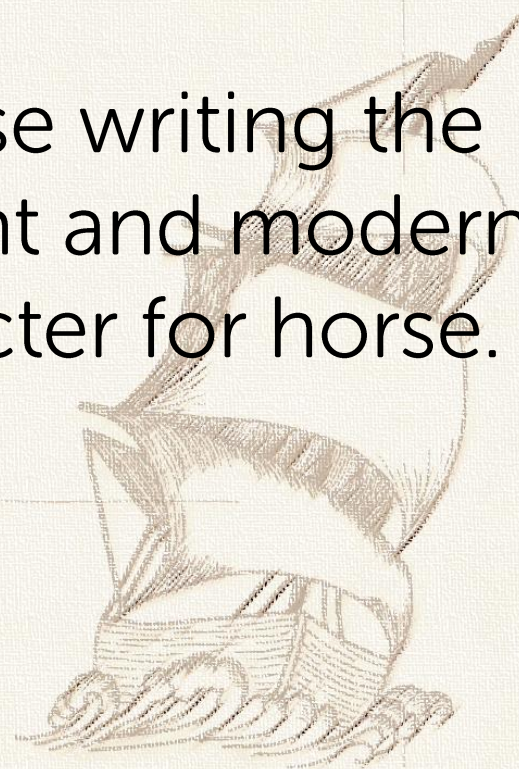
This character is an ancient way of writing horse. The modern character for horse is

馬

uma

Challenge

Practise writing the ancient and modern character for horse.





Japan

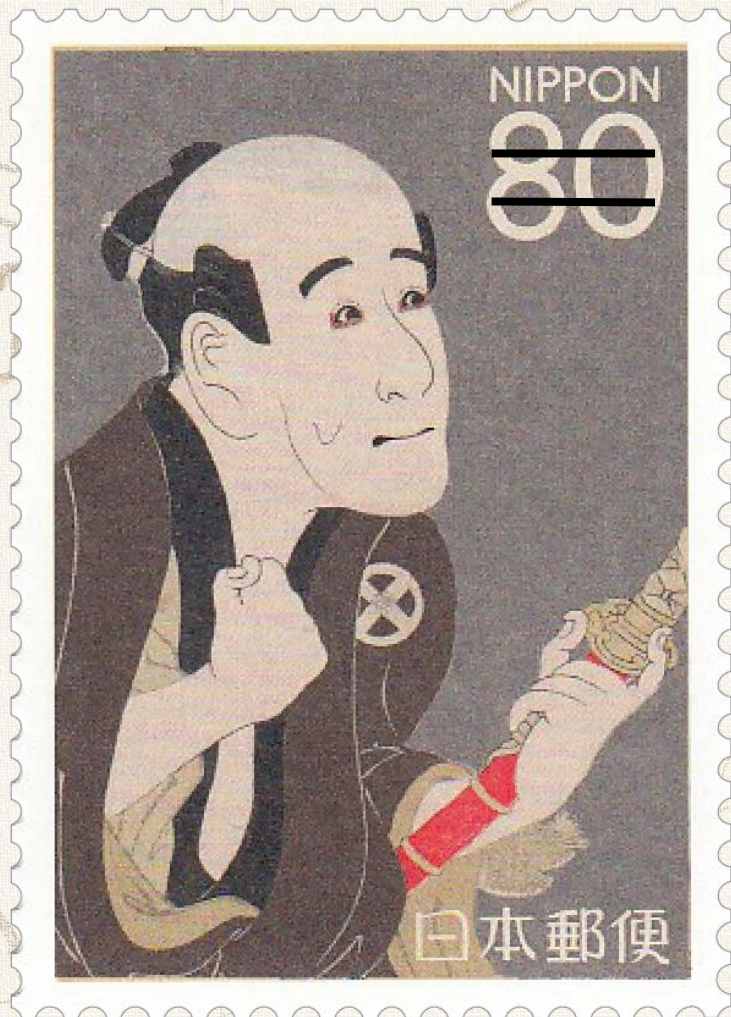
lacquer
urushi

漆
うるし

Challenge

Japan is famous for many traditional crafts. This table is an example of Wajima Lacquerware. Wajima is a city in Japan.

Find out where Wajima is on a Japanese map.
What else is lacquer used for?
Where does lacquer come from?



traditional theatre
kabuki 

歌舞伎
かぶき

Kabuki is a form of
traditional theatre.

Challenge

There are three main types
of Japanese theatre:
kabuki かぶき, noh のう
and bunraki ぶんらく.

Find out about them.



Japan

map
chizu



地図
ちず

Challenge

Some people say
that the map of Japan
is shaped like a two
headed dragon.

How many hours is
Japan ahead or behind
the UK?

Do the Japanese change
their clocks seasonally,
like we do?



cherry blossom
sakura

桜
さくら

Japan is famous for its
pink cherry blossom.

Hanami, 花見, はなみ
means flower viewing and
is the popular pastime of
cherry blossom viewing.

hana

花

flower

mi

見

viewing

Challenge

Cherry blossom
appears on many
Japanese stamps.

Start a collection of
Japanese stamps and
make an artistic page
with the stamps.



Japan

calligraphy
shodou

書道
しゅどう

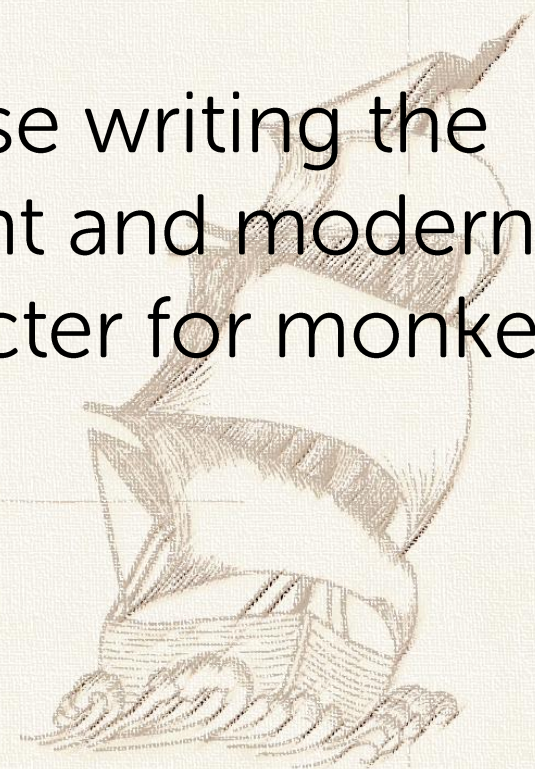
Challenge

This character is an ancient way of writing monkey. The modern character for monkey is

猿

saru

Practise writing the ancient and modern character for monkey.



Japan



national flag

kokki



国旗
こつき

Hi no maru, 日の丸 ,
ひのまる is the way the
Japanese refer to their flag.
Literally it means 'circle of
the sun'. *Nihon*, 日本, にほん,
Japan - literally means origin
of the sun and Japan is often
called 'land of the rising sun'.

Challenge

Draw the Japanese flag.





silk
kinu

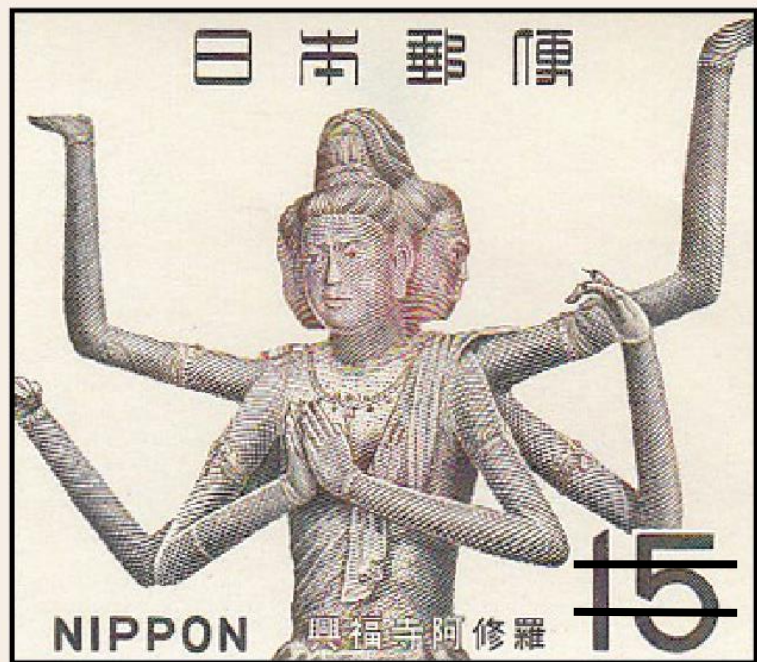
絹
きぬ

Challenge

The Chinese were the first to make silk but Japanese silk is also very famous and began in the 3rd century.

Find out how silk is made.

Draw a diagram to show the different stages.



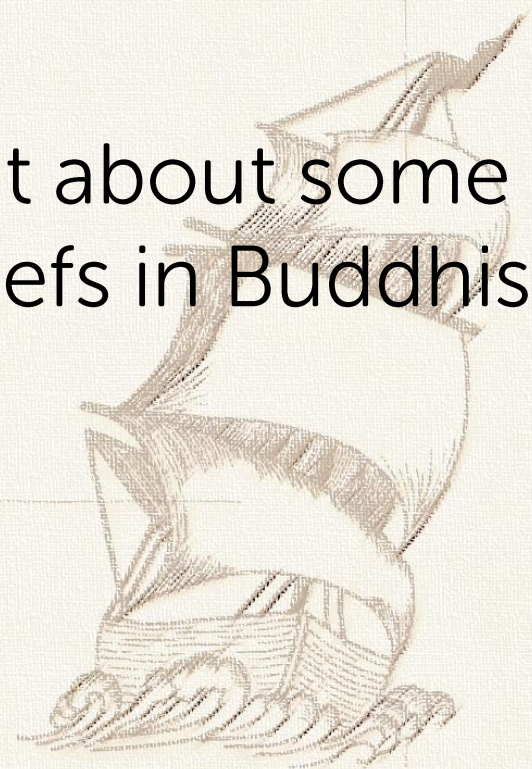
Asura statue
ashura guuzou

阿修羅偶像
あしゅらぐうぞう

Challenge

An Asura statue is the lowest of the demi-gods in Buddhism. They have three faces and either four or six arms.


Find out about some of the beliefs in Buddhism.



Japan



puffer fish

fugu 

フグ

[usually only written in kana]

Puffer fish are very poisonous but they are eaten in Japan.

A very skilful chef prepares the fish and leaves a tiny amount of poison in, which makes your mouth tingle. Leaving the right amount is crucial, otherwise the customer is dead!

Challenge

How many years must a chef train to be allowed to prepare puffer fish?

What is the name of the poison in puffer fish?

Japan



INTERNATIONAL LETTER WRITING WEEK 国際文通週間 1994

sugoroku
sugoroku

双六
すごろく

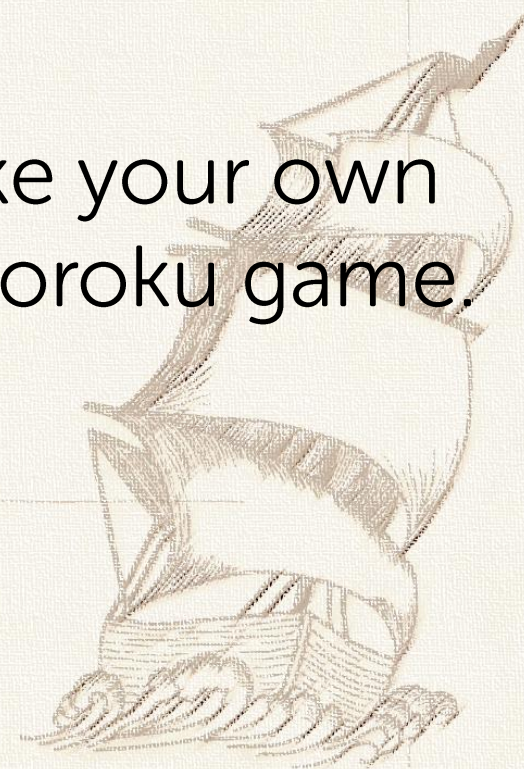
Sugoroku is a traditional Japanese game. You are playing a modern stamp sugoroku.

双 means double

六 means six

Challenge

Make your own Sugoroku game.





red-crowned crane
tanchouzuru 

丹頂鶴
たんちょうづる

[Usually only written in kana.]

The red crowned crane
is also called the
Japanese crane and is
endangered.

丹 means red
頂 means crown
鶴 means crane

Challenge

Find out more about
the red-crowned crane:

- range
- habitat
- diet
- breeding
- threats



Japan



volcano
kazan



火山
かざん

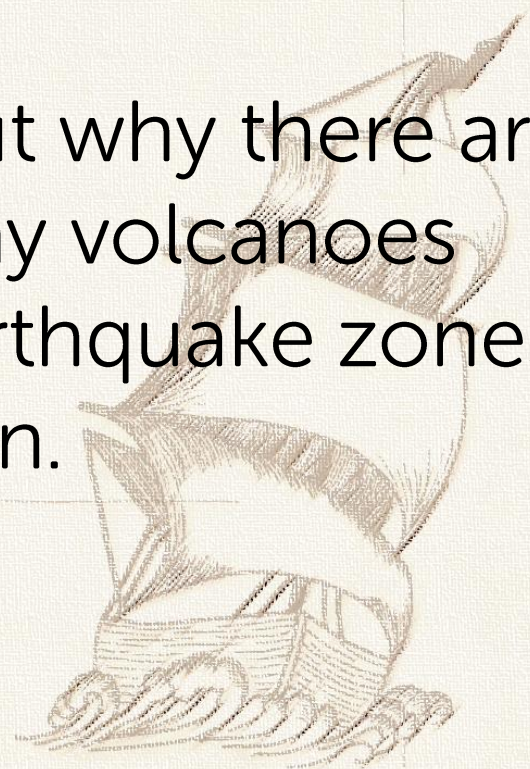
Challenge

Japan has many active volcanoes. Japan is on the Pacific 'ring of fire'.

火 means fire

山 means mountain

Find out why there are so many volcanoes and earthquake zones in Japan.



Japan



calligraphy tools
bunbou shihou



文房四宝
ぶんぼうしほう

Challenge

The four basic tools of calligraphy are called the 'four treasures of the study'. This stamp shows an ink stone case, *suzuri-ishi-bako*, 硯石箱, すずりいしばこ

Name the four basic tools of calligraphy.

Make a Japanese style ink painting.



Japan

NIPPON



Mount Fuji
fujisan 

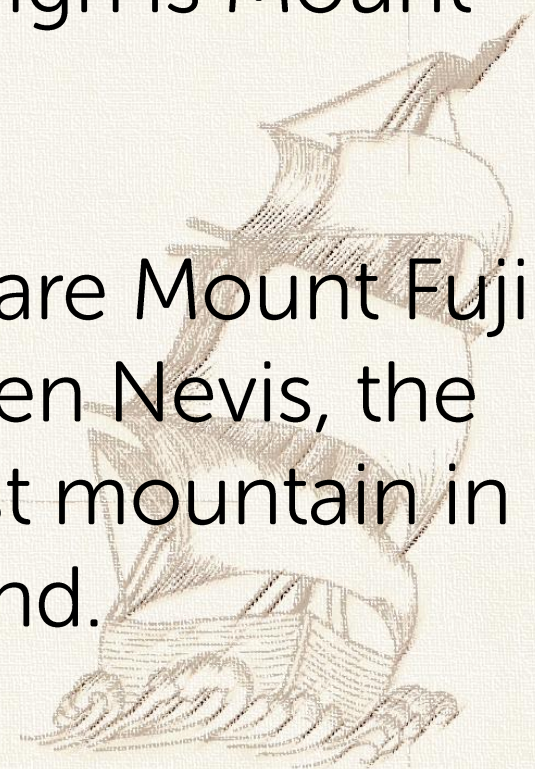
富士山
ふじさん

Mount Fuji is the highest mountain in Japan. It is an active volcano but hasn't erupted for many years.

Challenge

How high is Mount Fuji?

Compare Mount Fuji with Ben Nevis, the highest mountain in Scotland.





landscape

keshiki 

景色
けしき

Challenge

The '100 Landscapes of Japan' 日本百景 is a list of famous sites in Japan.

Name some famous places in Japan.



Japanese food
washoku

和食
わしょく

There are many famous Japanese foods. One is *kaiseki*, 懐石, かいせき, a traditional multi-course dinner.

Challenge

Find out about some Japanese foods.

Find out the difference between sushi and sashimi.